

The World's Most Trusted Industrial Bolting Systems

# BACK-UP WRENCH

Square Drive Torque/Tension Wrench



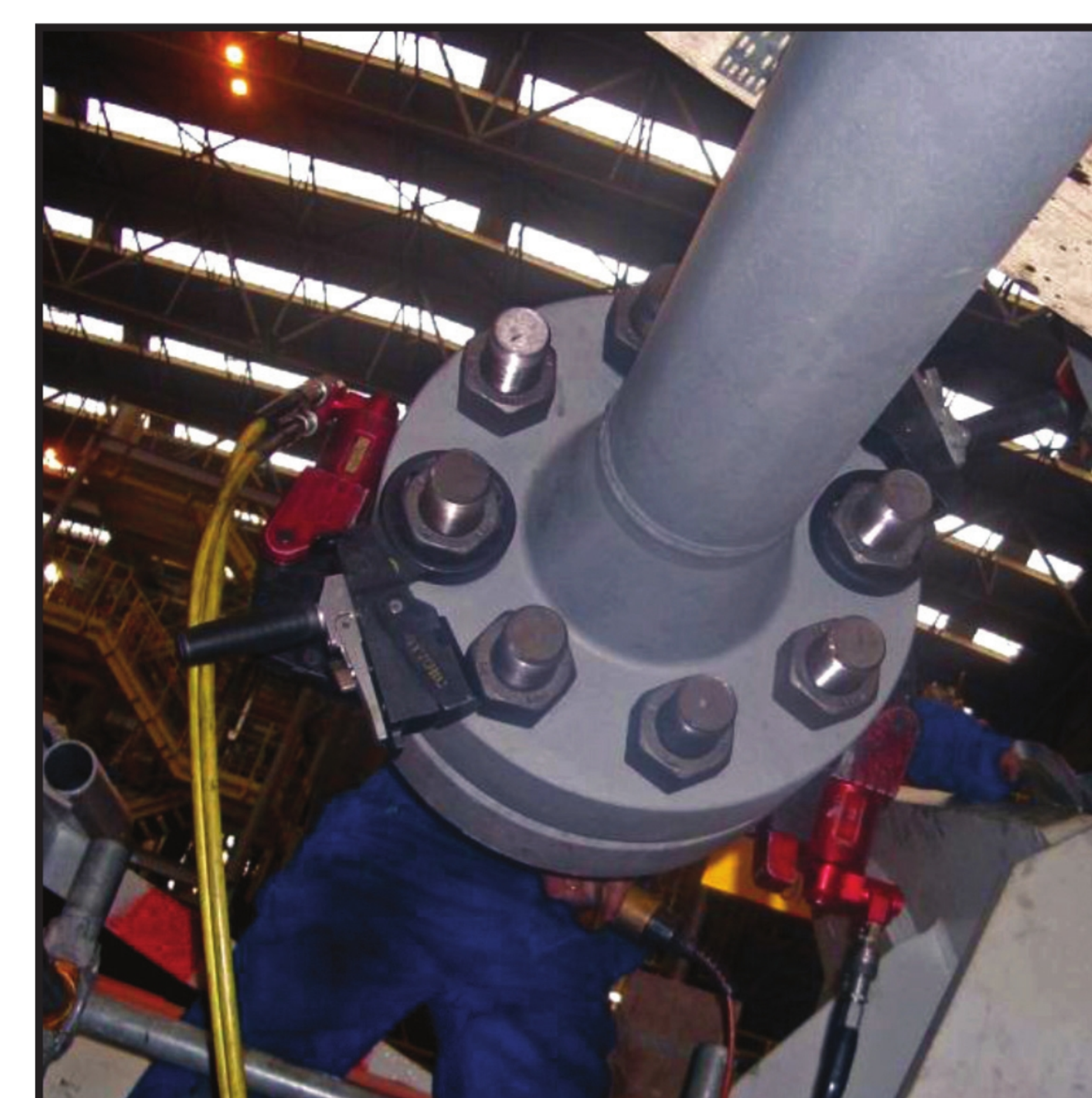
- Counter-nut does not rotate with nut; easy and fast
- Interchangeable spanners from 1-7/16 / 36mm to 3-1/8 / 80mm (max. 3,983 ft.-lbs./5,400 nm)
- Work faster, safer, and more efficiently than with other methods!
- No hammer necessary for removal, increasing productivity and safety
- Hands-free operation eliminates possible pinch points, increasing safety on the job

Place the Back-Up Wrench on the counter-nut, then tighten the nut with a torque wrench. When torquing is complete, remove the Back-Up Wrench from the counter-nut. Speed of work will also increase significantly when compared to removal methods using a hammer and slugging wrench.



Using our Back-Up Wrench also makes the torquing process Hands-Free, eliminating possible pinch points.

Removal of the Back-Up Wrench does not require the use of a hammer, Making removal very easy and much safer than other methods.



COMPLETE BOX: BW-M Metric Size M box includes drive and 10 links (Sizes 36 mm to 80 mm)		COMPLETE BOX: BW-S Inch Size S box includes drive and 10 links (Sizes 1 7/16" to 3 1/8")	
SIZE	REF.	SIZE	REF.
36mm	BL-36mm	1 7/16"	BL-107
41mm	BL-41mm	1 5/8"	BL-110
46mm	BL-46mm	1 13/16"	BL-113
50mm	BL-50mm	2"	BL-200
55mm	BL-55mm	2 13/16"	BL-203
60mm	BL-60mm	2 3/8"	BL-206
65mm	BL-65mm	2 9/16"	BL-209
70mm	BL-70mm	2 3/4"	BL-212
75mm	BL-75mm	2 15/16"	BL-215
80mm	BL-80mm	3 1/8"	BL-302

**24 Hour SERVICE**

**713-453-6677**

**www.hytortexas.com**

**HYTORC®**  
*Since 1968*

12420 Texaco Rd, Houston, TX 77013

CAT-SH-ACCY-2014